



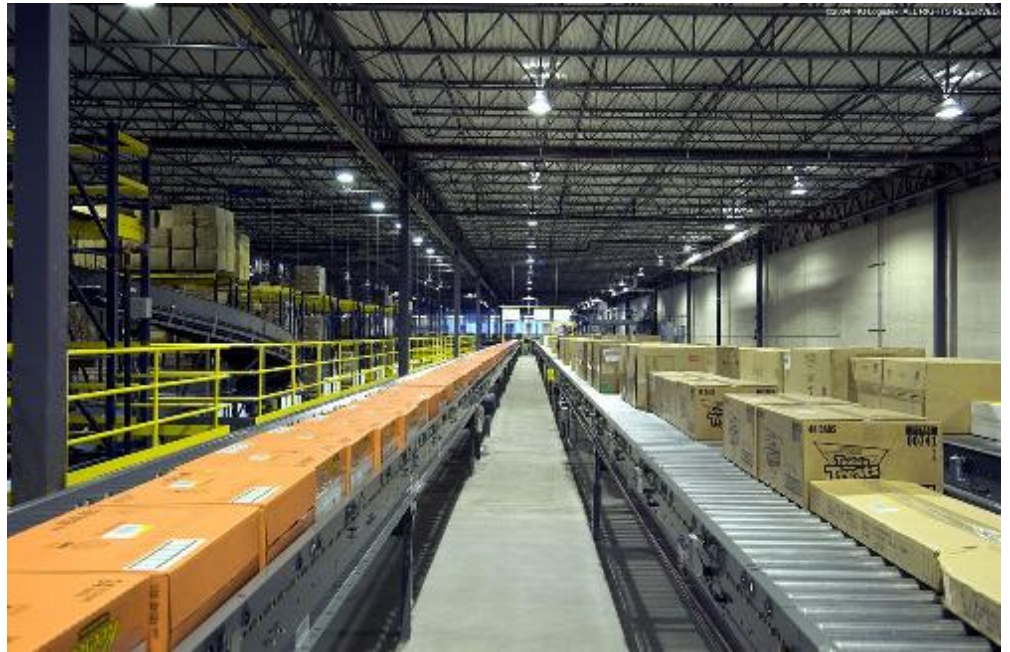
Accuglide™

F E A T U R E S

- Singulation, auto-slug and slug operational modes
- Photo-eye sensors
- Accumulating 90° curve sections
- Integral case stops and brake modules

B E N E F I T S

- Easy, economical installation and start-up
- Quiet, positive transportation with zero pressure accumulation
- Quick and easy conveyor release mode configuration
- Safe low-voltage power supply requirements



The FKI Logistex Accuglide powered roller conveyor provides quiet, positive transportation and zero-pressure accumulation of cartons, totes, etc. in accumulation lines that may include both straight and curve sections. Accuglide is available with operational modes that allow for maximum output at the lowest possible speed, and integrates 24-volt photo-eye sensors with zone control modules to optimize product detection and flow.

The integration of 24-volt photo-eye sensors and zone control modules into Accuglide's design provides the following benefits:

- Easy zone control/power connections
- Quick and easy conveyor release mode configuration
- Sections delivered ready to install and run (sensors/control modules)
- Micro connector power/communication connections
- Safe low-voltage power supply requirements
- Photo-eyes factory installed and aligned
- Release rates available up to 95%
- Acceptance rates up to 100%
- Quiet non-contacting sensors
- No product minimum weight limitation
- Product minimum height 25 mm (1 in)

Simple, efficient roller chain (RC50 w/extended pins) and urethane driver pad are pneumatically raised to engage and power the carrier rollers. They are lowered to disengage power from the rollers when sensors detect the presence of product within the next





Accuglide™

downstream zone.

Options include:

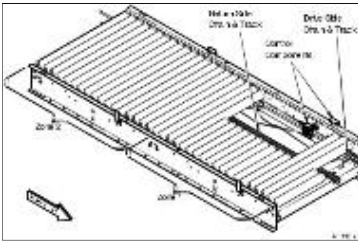
- Carrier rollers with ABEC precision bearings
- 50 mm (2 in) & 75 mm (3 in) carrier roller centers
- Brake-modules
- Standard, light-load and photo-eye sensors
- Power units providing speeds up to 1.2 m/sec (240 ft/min)

All sections are fully-assembled and are easily joined in the field to provide economical installation and startup.





Accuglide™



SPECIFICATIONS

Function: Controlled transportation and zero-pressure accumulation of product within straight and curve sections.

Width: 405 mm (16 in), 560 mm (22 in) and 710 mm (28 in), 865 mm (34 in) & 1 m (40 in) between frames

Intermediate Section: 3.7 m (12 ft) maximum length in 915 mm (3 ft) zone length increments; 160 mm (6.4 in) or 230 mm (9 in) deep side rails with bolted construction. Roller or photo-eye type sensors trigger an air-actuated lift mechanism that controls the engagement of the drive components with the carrier rollers. 230 mm (9 in) deep side rails (rollers set low) are available ONLY with photo-eye sensors.

Curve Section: 160 mm (6.4 in) or 230 mm (9 in) X 5 mm (10 gauge) rail, 50 mm (2 in) & 75 mm (3 in) roller centers, 30°, 45°, 60°, 90° and 180° arcs with constant 760 mm (2.5 ft) or variable true-taper inside radius frames.

Drive components: Urethane driver pad and RC50 roller chain with extended pins

End Drive Section: 1.8 m (6 ft) long with automatic chain-tensioner and lubricator; Under-hung power unit, .56 kW – 3.7 kW (.75 - 5 HP) C-face motor/reducer with fixed speeds up to 1.2 m/sec (240 ft/min); 295 kg (650 lbs) effective chain pull cap.

End Idler Section: 915 mm (3 ft) discharge zone

Operational Modes: Roller Sensor - Singulation, Auto-Slug or Slug. (Must be specified)
Photo-Eye Sensor - Singulation, Dual-Zone, Auto-Slug and Slug.

Live Load Capacity: 150 kg/m (100 lbs/ft) maximum

Spare Parts Kit: Spare parts kits can be customized for your installation

Service: Maintenance service programs available from Customer Service & Support (CSS), our multifaceted program that provides service 24 hours a day, 365 days a year

MARKETS SERVED

- Apparel Warehousing & Distribution
- Automotive
- Automotive Aftermarket
- Cold & Frozen Foods Distribution
- E-commerce
- Electronics & Small Appliance Distribution

All measurements are approximate.





Accuglide™

- Electronics/Computers Assembly Distribution
- Food & Beverage Distribution
- Grocery Distribution
- Health & Beauty
- Mail-Order Fulfillment
- Mail-Order Photo Processing
- Music & Video Media Distribution
- Pharmaceuticals Distribution
- Pharmaceuticals Manufacturer Distribution
- Publishing Distribution
- Shoe Distribution
- Technology Assembly Distribution
- Third Party Logistics

All measurements are approximate.

