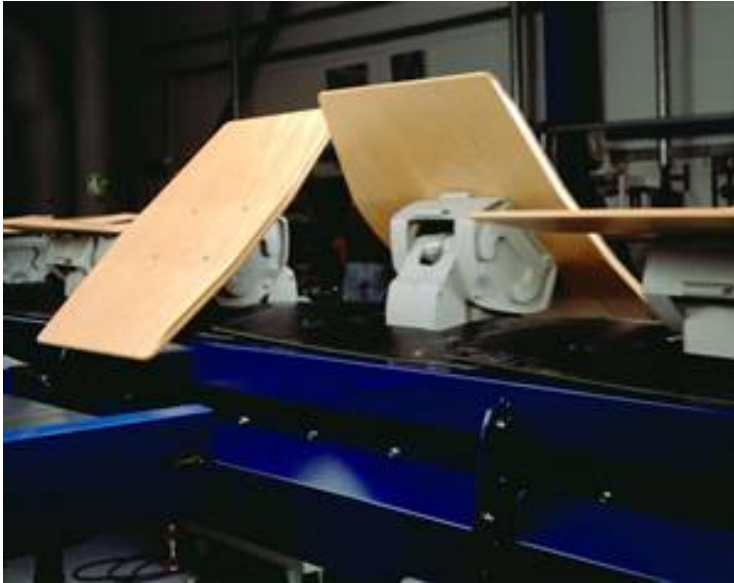




## S-3000E Tilt-Tray Sorter



### >> Product Description

The S-3000E Tilt-Tray Sorter is the latest generation in a long line of sortation equipment excellence. The S-3000E quickly and accurately sorts products with an adjustable velocity of up to 3.5 m/s (688 ft./min.), allowing for considerable capacity and speed increases over current generation sortation systems. Ultra-high speeds are made possible by the flexibility of the fully electronic tilt mechanism, which allows the trays to tilt while moving through curves to counter centrifugal forces.

The S-3000E electronic tilt mechanism has an adjustable tilt angle to a maximum of 45° resulting in superior discharge control and higher discharge accuracy. While still able to easily accommodate large items, the system's reliability is maintained even with a very small item size and weight. The tray pitch can be custom-configured for each specific application from 500 mm (19.7 in.) to 1250 mm (49.2 in.) in 50 mm (1.96 in.) increments. For maximum versatility, the system is also designed to handle two-tray and potentially three-tray items, and utilizes a non-proprietary control system. All of this in a system that operates at just 62 dB(A), from the global leader in high-speed sortation solutions, FKI Logistex.

With more than 900 sortation systems installed worldwide, FKI Logistex is the industry leader in high-speed sortation, catering to all types of distribution requirements. S-3000E sortation systems are used within a broad spectrum of applications including distribution, freight and parcel delivery, baggage handling, and manufacturing.

[www.fkilogistex.com](http://www.fkilogistex.com) • 877.935.4564



## S-3000E Tilt-Tray Sorter

### >> Features

- Low maintenance electronic tilt mechanism with programmable tilt function.
- Wide assortment of induction options from manual through fully automatic.
- Widest selection of chute designs that can be tailored to meet specific application requirements
- Open standard industrial network control design and standard I/O hardware ensure system upgradeability over the life of the system.

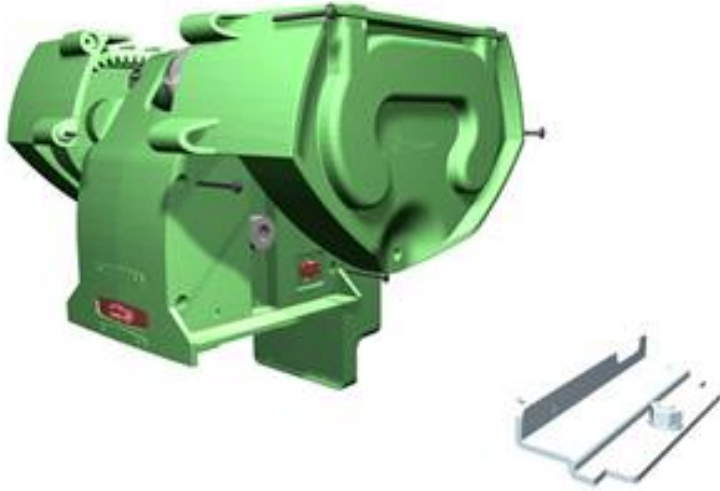
### >> Benefits

- Trays can tilt through curves to reduce centrifugal forces and keep product centered on the tray.
- Electronic tilt allows better discharge optimization across the full range of items sorted.
- "Kick" motion at end of tilt action ensures discharge from tray.
- Modular frame and cart design to reduce the amount of time required for commissioning and layout changes.
- New design has less moving parts to wear, increasing system life.
- With thousands of inductions commissioned, FKI Logistex has the most proven induction algorithms to ensure accurate loading of product.



## S-3000E Tilt-Tray Sorter

### >> Technical Specifications



Drive System: Linear electric motors

Sorter Velocity: up to 3.5 meters / second (688 ft. / min.)

Noise Level: 62 dB(A)

Maximum Item Length: 1000 mm (39 in.) single tray; 1475 mm (58 in.) spanning two-tray; consult factory for three-tray

Maximum Item Width: 900 mm (35.4 in.)

Maximum Item Weight per Tray: 50 kg. (110 lbs.) standard carrier; 70 kg (154 lbs.) with enhanced tray support

Max. Frame Incline: Up to 10°, optional tray design can allow for slight increase

Temperature Range: -5° C (23° F) to +50° C (122° F); extended range possible with the addition of special heating and/or cooling elements.

### >> Sales Contact

To contact the FKI Logistex Sales Contact for S-3000E Tilt-Tray Sorter, please e-mail [manufacturing@fkilogistex.com](mailto:manufacturing@fkilogistex.com) or phone +1.877.935.4564.

**www.fkilogistex.com • 877.935.4564**